

Builder Kit Assembly Instructions



Prestige Surround

Prestige and Stafford Surrounds



Stafford Surround

Congratulations on your new surround purchase! Now that the blood is pumping from unpacking the surround, you are ready to put it together. Good luck!

Parts included in Kit

Included in the builder kit is the following:

- 1 faceplate
- 2 columns
- 3 pieces for the shelf
- 2 strips of column trim
- 2 strips of crown molding
- The Prestige kit also includes:
 - 2 oval medallions
 - 1 keystone medallion

Neither a hardware pack nor mounting boards are included in this kit. One-inch mounting boards can be cut down from any material you prefer such as 2x4, 2x6, 2x2 or scrap wood.

Tools and Supplies Needed

To assemble the surround, you will need the following (quantities are approximate):

- 8- 1¼" screws
- 25- 3" screws
- 20- 1¼" finish nails
- 40- 1" finish nails
- Wood glue
- Construction adhesive (optional)
- Mounting boards
- Spacer blocks
- A drill with a Phillips bit
- A hammer
- A level
- A saw to cut a miter
- A saw to cut the columns (if needed)
- 3-4 C-clamps (if available)

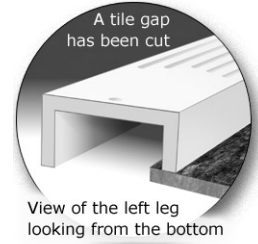
STEP 1

Determine the desired height of the columns.

COMMENT: The standard height of the columns may suit your needs perfectly, but you may desire to make them shorter. This would depend on several factors: the amount of exposed tile desired around the firebox, the amount of room available, personal tastes, etc.

NOTE: If the columns need to be shortened, be sure to cut equal amounts off of both ends. This will maintain equal distance from the end of the flutes to the end of the column. For the Prestige style, a maximum of 4" can be cut from both ends of each column, for a total of 8". For the Stafford style, a maximum of 5¾" can be cut from both ends of each column, for a total of 11½".

TILE GAP: If there is tile or marble installed around the firebox, or there will be tile or marble surrounding the firebox, it is useful to cut a tile gap in the columns. By making a cut in the inside back of the columns equal to the thickness of the tile, you can accommodate the inside of the columns fitting flush against the tile and the outside of the columns fitting flush against the wall.

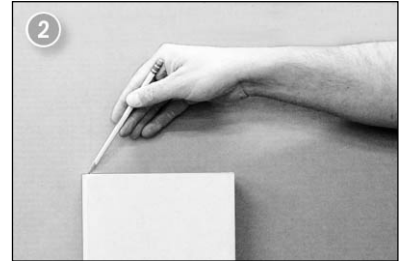


NOTE: For the purpose of cutting the tile gap, the thickness of the tile is defined as the overall thickness of the tile *plus* the thickness of the mortar, backer board, etc.—the overall depth from the wall to the front of the installed tile. Please keep this in mind throughout the installation!

STEP 2

Set one of the columns on the floor or hearth at the center of the firebox, hold it flush to the wall and draw a pencil line on the wall along the top edge of the column.

COMMENT: The top of the faceplate will be at the same height as this pencil mark.



STEP 3

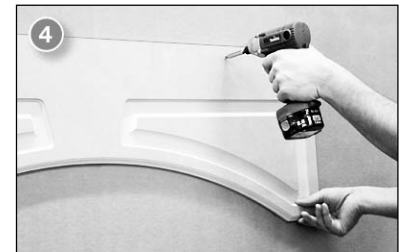
With wood glue, attach spacer blocks to the back of the faceplate that are the same thickness as the tile. Follow the instructions on the glue to allow for proper drying time. Attach the keystone in the outlined area.

COMMENT: This will hide the seam between the tile and the faceplate. If the tile is not installed yet, this will also allow the tile to go behind the faceplate without having to cut it. If there will not be any tile around the firebox, **do not** attach any spacer blocks to the back of the faceplate. Attach the faceplate directly to the wall.



STEP 4

Locate the studs in the wall (usually 16" on center, sometimes 24" on center). Using a level, position the top of the faceplate level with the pencil line made in step 2, and centered over the firebox. Attach the faceplate to the studs with 3" screws.



TIP: If desired, pre-drill the holes for the screws. It is best to place the screws in the top 2½" of the faceplate and in the marked area for the keystone medallion. That way there will be no screw holes in the visible areas of the faceplate.

STEP 5

Place the columns against the outside edges of the faceplate. Use a level to make sure they are square with the faceplate. Draw a pencil line on the wall along both vertical edges of each column.



STEP 6

Remove the columns and attach mounting boards ¾" to the inside of the pencil lines with construction adhesive (or glue) and 3" screws. **Pre-drill the mounting boards for screws.**

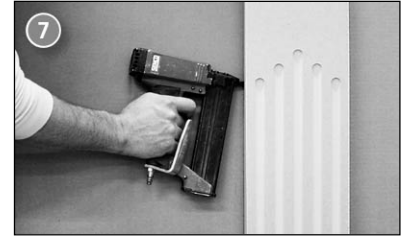
TIP: If possible use 3" screws to attach the mounting boards to a stud in the wall. If no stud is available, be sure to use construction adhesive and follow the product instructions.



STEP 7

Replace the columns against the outside edges of the faceplate, over the mounting boards. Secure the columns to the mounting boards with 1¼" finish nails. If desired, glue on the mounting boards may also be used in addition to the nails.

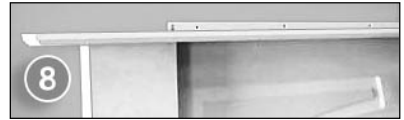
NOTE: For the Prestige style, make sure to orient the columns so that the oval medallions will be towards the top of the columns.



STEP 8

COMMENT: The shelf is comprised of three separate pieces that are different sizes, creating three layers. All routed edges will be placed facing downward. The middle layer has a notch in the back to accommodate a mounting board.

Place the bottom layer of the shelf (the smallest of the three pieces) on top of the columns and faceplate. Draw a pencil line on the wall along the top edge of this layer.



STEP 9

Remove the bottom layer. Locate the studs in the wall. Place the bottom edge of a mounting board level with the pencil line drawn in step 8. Attach the mounting board to the studs with construction adhesive (or glue) and 3" screws. **Pre-drill the mounting board for screws.**

NOTE: Make sure that the mounting board is not longer than the notch in the middle layer and that it is not thicker than ¾" x ¾". In addition, make sure that it is positioned on the wall so that it will fit within the notch in the middle layer.

STEP 10

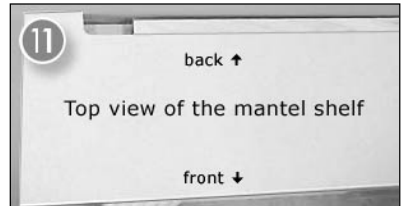
Run a bead of glue on top of the columns and faceplate and position the bottom layer of the shelf (the smallest) to where there is equal distance of overhang on each side. Secure this layer to the top of the columns with 1¼" screws. Also, use 1¼" finish nails and nail down through the mounting board into the bottom layer.

TIP: Pre-drill the screw holes to secure the bottom layer to the top of the columns. Otherwise, the columns may split. Also, be sure to counter-sink the screw holes so that the heads of the screw are flush with the top.



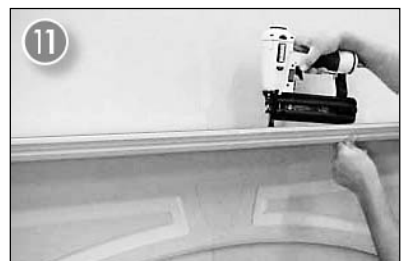
STEP 11

Locate the middle layer of the shelf. Spread glue on the top of the bottom layer and position the middle layer to where there is equal distance of overhang on each side. Secure the middle layer to the bottom layer using 1¼" finish nails.



STEP 12

Locate the top layer of the shelf (the largest of the three shelf pieces). Spread glue on the top of the middle layer and position the top layer to where there is equal distance of overhang on each side. If available, secure the top layer by using C-clamps to hold it in place while the glue dries.



TIP: Be sure to pad the shelf from the C-clamps to avoid putting any dents in it. Using glue and clamps to secure the top layer prevents having any holes in the top of the shelf. If no C-clamps are available, use 1¼" finish nails to secure the top layer to the middle layer.

STEP 13

COMMENT: Time to cut the moldings. Locate the two strips of wood that are 5¼" wide by 48" long with one routed edge. These are the column trim strips and will go at the top and bottom of the columns. The routed edge will face towards the middle of the column on both the top and bottom.

Miter and cut to size the column trim strip to trim all three sides of the top and bottom of the columns. Attach all pieces appropriately with glue and 1¼" finish nails



TIP: If there will be tile around the firebox and it is not yet installed, cut the column trim for the bottom, inside leg of the column a little "short" (see picture). Cut it the depth of the column, less the thickness of the tile. This will allow the tile to fit behind the column trim piece, and avoid the need to notch the tile during its installation. If desired, the bottom column trim pieces can be mitered, cut to size and attached after the tile is installed to ensure proper fit.

STEP 14

COMMENT: The crown molding runs under the top shelf, following the ins and outs of the columns and faceplate. Be sure to orient the crown so that the profile matches the profile shown in the photo.

Miter and cut to size the crown molding to wrap both columns and across the faceplate. Attach all pieces appropriately with glue and 1" finish nails.



STEP 15

Finally, glue and place the medallions in the marked areas of the columns. Tape can be used to hold the medallions or appliqués in place while the glue dries.



STEP 16

The last thing to do is prep the surround for paint or finish. Putty any visible nail or screw holes. Caulk as needed between the wall and surround. Also, check all the joints in the surround itself and caulk as needed. Sand as needed (which is usually not much). **YOU ARE DONE!**

Note: If you plan to paint the surround, it is generally best to prime it prior to painting.

